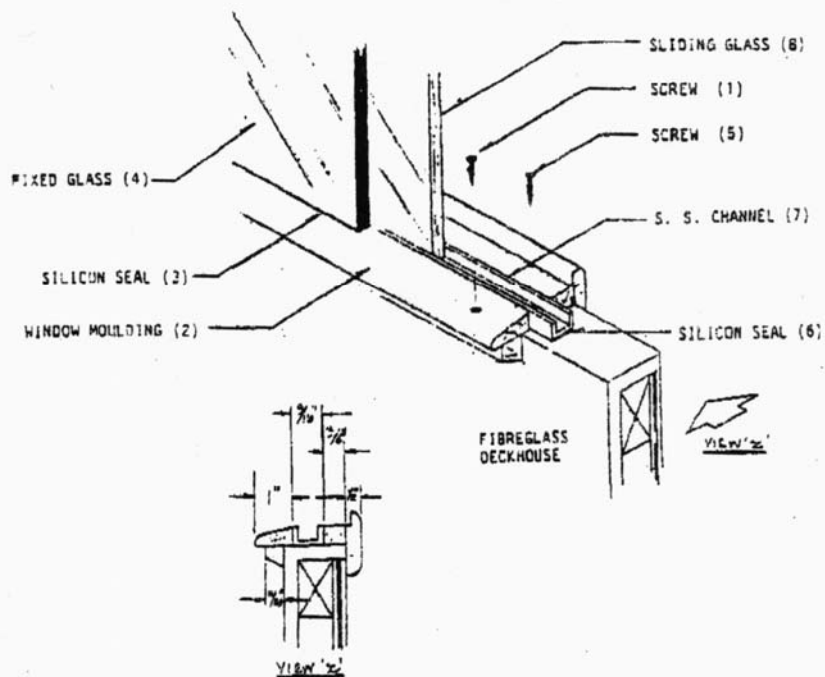


### Part V Maintenance Window Frame removal procedure

#### A. Procedure to remove glass from wooden window frames (For most GBs)

1. Refer to figure below .Remove screws (1) on window moulding (2).
2. Remove moulding (2).
3. Using a paint scrapper or any sharp tool to break silicon seal (3) between fixed glass (4) and fibreglass deck house.
4. Remove fixed glass (4).
5. Remove screw (5) in stainless channel in (7).
6. Using scrapper to break silicon seal (6) between stainless steel channel (7) and fibreglass deckhouse.
7. Carefully remove stainless steel channel (7) as sliding glass (8) is already loose.



**GRAND BANKS****PART VI****Page 02****B. Removal of window glass from aluminium windows for old GB42 Eu, and GB42 MY.****1. Sliding glass:**

- a. Slide glass forward towards the fixed glass.
- b. Use a screw driver to lift up the aft end of the felt lining.
- c. Pull the felt lining out.
- d. Use the screw driver again to lift up the thin perspex sheet at the bottom of the aluminium track.
- e. Pull the perspex strip out whilst holding the glass to prevent it from falling out.
- f. Tilt the top end inboard and out of the aluminium track and remove glass.

**To reinstall new piece of sliding glass:**

- a. Insert the lower end of the glass into the bottom aluminium track and place the glass into the track.
- b. Lift the sliding glass upwards till the top edge hit the top of the aluminium track and slide in felt lining. (This is a two men operation one lifting the glass and the other insert felt lining.)
- c. When felt lining had been inserted, lift up glass again and slide in perspex strip.

**2. Fixed glass:**

- a. Remove the stainless steel felt lining seal (short vertical piece).
- b. Pull out the black rubber lining.
- c. Use sharp blade and slide in between the glass and aluminium window frame to cut silicon bond.
- d. Remove glass and clean silicon around the aluminium window frame.
- e. Reapply silicon along the aluminium frame and insert new piece of glass.
- f. Insert black rubber lining by using a 1/4" thick 1" wide perspex or wood.