

FIG. 9    RAW WATER COOLING SYSTEM

QUANTITY

305    350

ITEM	PART NO.	DESCRIPTION	RH	LH	RH	LH
1	186285	BOLT 3/8 - 16 x 4"	2	2	2	2
2	103321	WASHER 3/8 LOCK	2	2	2	2
3	186282	BOLT 3/8 - 16 x 3 1/4"	1	1	1	1
4	96101	COVER STAT HOUSING	1	1	1	1
5	23025	HOSE COVER TO MANIFOLD NOTE 1	1	1	1	1
6	23025	HOSE COVER TO MANIFOLD NOTE 1	1	1	1	1
7	20228	HOSE CLAMP # 20	5	5	5	5
8	96686	SPRING RELIEF VALVE	1	1	1	1
9	96066	VALVE	1	1	1	1
10	96065	SEAT	1	1	1	1
11	96319	THERMOSTAT 143°	1	1	1	1
12	97361	COVER GASKET	1	1	1	1
13	20326	ALARM SENDER ENGINE WATER TEMP.	1	1	1	1
14	96102	THERMOSTAT HOUSING	1	1	1	1
15	96323	HOSE CIRC. PUMP TO STAT HSG.	1	1	1	1
16	20230	HOSE CLAMP # 28	1	1	1	1
17	96105	GASKET STAT HSG. TO INTAKE MANIFOLD	1	1	1	1
18	103321	WASHER 3/8 LOCK	1	1	1	1
19	102635	NUT 3/8 - 16	1	1	1	1
20	23029	HOSE 1 1/4 x 11 1/4	1	1	1	1
21	97112	OIL COOLER 5" REVERSE GEAR NOTE 2	1	1	1	1
22	143340	ELBOW 45° OIL LINE NOTE 2	1	1	1	1
23	137409	ADAPTER OIL LINE NOTE 2	1	1	1	1
24	96967	OIL LINE CLR. OUT TO GEAR IN D.D. ONLY	1	1	1	1
24	96962	OIL LINE CLR. OUT TO GEAR IN RED ONLY	1	1	1	1



FIG. 9 RAW WATER COOLING SYSTEM

QUANTITY

350

305

ITEM	PART NO.	DESCRIPTION	RH		LH	
			RH	LH	RH	LH

25	96960	OIL LINE GEAR OUT TO COOLER IN	1	1	1	1
26	127950	PLUG 1/8 NPT	1	1	1	1
27	91465	CLAMP 1/2 COOLER	1	1	1	1
28	179795	BOLT 1/4 - 20 x 3/4	1	1	1	1
29	109084	NUT 1/4 - 20	1	1	1	1
30	103319	WASHER LOCK 1/4	1	1	1	1
31	91466	CLAMP 1/2 COOLER	1	1	1	1
32	97310	HOSE FORMED PUMP TO COOLER 1 1/4 I.D.	1	1	1	1
33	97442	ELBOW PUMP INLET	1	1	1	1
34	96760	ADAPTER PUMP OUTLET	1	1	1	1
35	97179	RAW WATER PUMP ASS'Y	1	1	1	1
36	179837	BOLT 3/8 - 16 x 3/4	1	1	1	1
37	103321	WASHER 3/8 LOCK	1	1	1	1
38	102635	NUT 3/8	1	1	1	1
39	179843	BOLT 3/8 - 16 x 1 1/2	1	1	1	1
40	179850	BOLT 3/8 - 16 x 2 3/4	1	1	1	1
41	103321	WASHER 3/8 LOCK	2	2	2	2

NOTE 1: FOR REVERSED MANIFOLDS USE # 23028 1 - 1/4" x 30"




<b>MARINE ENGINES</b>					
					
<b>PARTS CATALOG</b>	<b>QUANTITY</b>				
	<b>305</b>		<b>350</b>		
	RH	LH	RH	LH	
<b>ITEM</b>	<b>PART NO.</b>		<b>DESCRIPTION</b>		
	NOTE 2:		FOR WARNER V-DRIVE USE THE FOLLOWING PARTS		
21	97425	9"	COOLER WARNER V-DRIVE	1	
25	22160	OIL LINE GEAR TO COOLER,	WARNER V-DRIVE 48"	1	
24	22161	OIL LINE COOLER TO GEAR	WARNER V-DRIVE 62"	1	
23	143340	45° ADAPTER		1	
22	30526	90° ADAPTER		1	



FIGURE 10

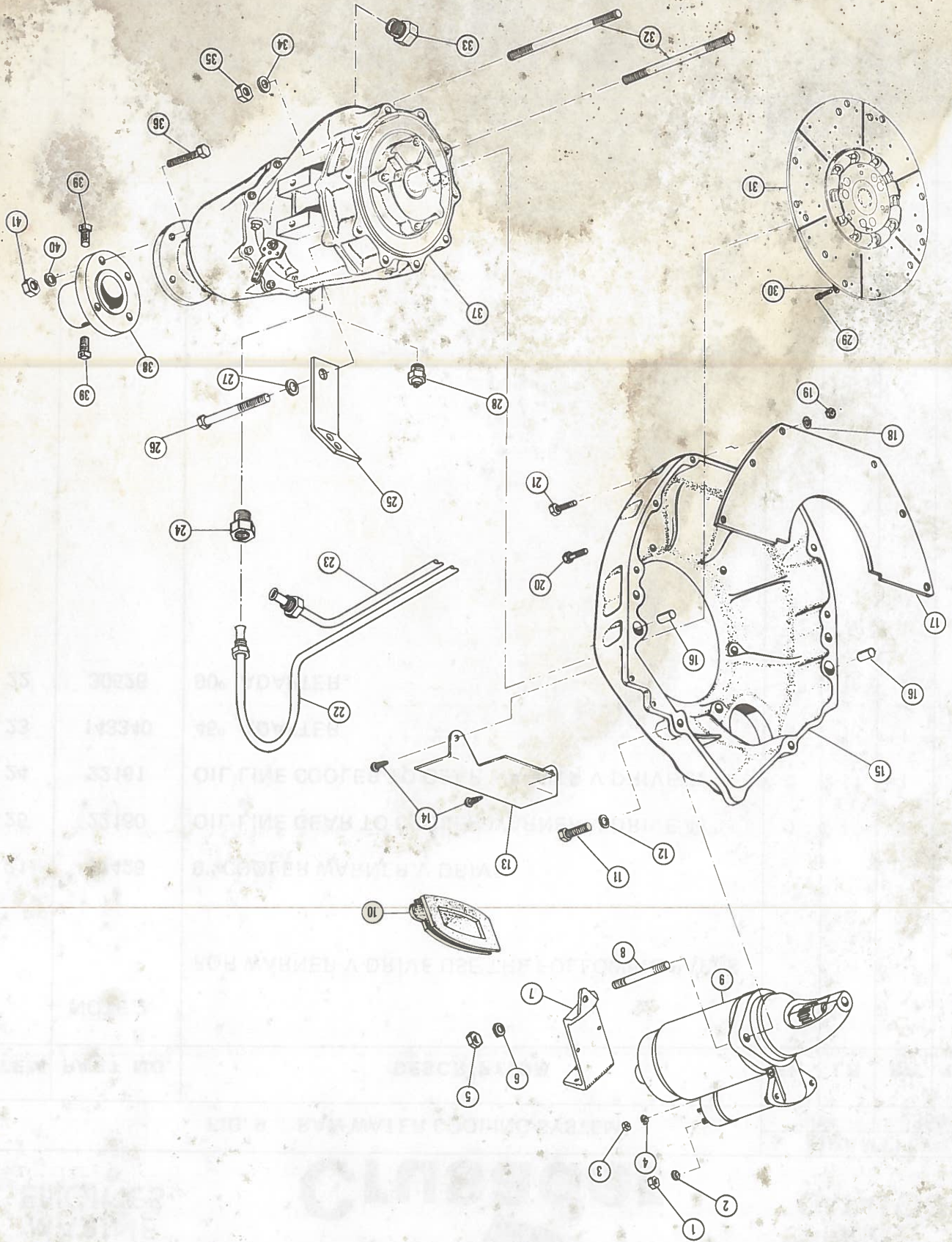




FIG. 10 FLYWHEEL HOUSING ASSEMBLY

QUANTITY

305

350

ITEM	PART NO.	DESCRIPTION	RH		LH	
1	134570	NUT 3/8 - 16	1	1	1	1
2	103321	WASHER 3/8 LOCK	1	1	1	1
3	113103	NUT #8 - 32	1	1	1	1
4	106496	WASHER #8 LOCK	1	1	1	1
5	271500	NUT 7/16 - 14	2	2	2	2
6	103322	WASHER 7/16 LOCK	2	2	2	2
7	97478	BRACKET CIRCUIT BREAKER & RELAY	1	1	1	1
8	96433	STUD STARTER MOTOR ATTACHING	2	2	2	2
9	42083	STARTERMOTOR Note 1	1	1		
9	42084	STARTERMOTOR Note 1			1	1
10	96350	COVER TIMING ACCESS HOLE	1	1	1	1
11	179841	BOLT 3/8 x 1 1/4"	4	4	4	4
12	103321	WASHER 3/8 LOCK	4	4	4	4
13	96952	NAME PLATE Note 2	1	1	1	1
14	97043	SCREW #6 DRIVE	2	2	2	2
15	96938	FLYWHEEL HOUSING	1	1	1	1
16	30152	DOWEL HOUSING TO BLOCK	2	2	2	2
17	97315	COVER FLYWHEEL HOUSING	1	1	1	1
18	103319	WASHER 1/4 LOCK	6	6	6	6
19	109084	NUT 1/4 - 20	6	6	6	6
20	179801	BOLT 1/4 - 20 x 1 1/2	1	1	1	1
21	179799	BOLT 1/4 - 20 x 1 1/4	5	5	5	5
22	96961	OIL LINE COOLER OUT TO GEAR IN D.D. ONLY	1	1	1	1
22	96962	OIL LINE COOLER OUT TO GEAR IN RED ONLY	1	1	1	1
23	96960	OIL LINE GEAR OUT TO COOLER IN ALL	1	1	1	1



FIG. 10 FLYWHEEL HOUSING ASSEMBLY

QUANTITY  
305  
350

ITEM	PART NO.	DESCRIPTION	RH	LH	RH	LH
24	30562	ADAPTER OIL LINE TO CASE	1	1	1	1
25	96341	BRACKET SHIFT CABLE	1	1	1	1
26	179873	BOLT 7/16 - 14 x 3 - 3/4	4	4	4	4
27	103322	WASHER 7/16 LOCK	4	4	4	4
28	21088	ALARM SENDER GEAR TEMP.	1	1	1	1
29	22030	BOLT DAMPER TO FLYWHEEL SPECIAL	6	6	6	6
30	103321	WASHER 3/8 LOCK	6	6	6	6
31	97171	DAMPER ASS'Y	1	1	1	1
32	96541	STUD TRANS ATTACHING	2	2	2	2
33	137425	FITTING 90° GEAR INLET DIRECT DR. ONLY	1	1	1	1
33	143340	FITTING 45° GEAR INLET RED DR. ONLY	1	1	1	1
34	103322	WASHER 7/16 LOCK	2	2	2	2
35	102636	NUT 7/16 SPECIAL	2	2	2	2
36	181397	BOLT COUPLING SPECIAL GRADE 8	4	4	4	4
37	9001547	TRANSMISSION ASS'Y 1:1 NOTE 3	AR	AR	AR	AR
37	9001545	TRANSMISSION ASS'Y 1.52:1 NOTE 3	AR	AR	AR	AR
37	9001541	TRANSMISSION ASS'Y 1.91:1 NOTE 3	AR	AR	AR	AR
37	1012780	TRANSMISSION ASS'Y 2.10:1 NOTE 3	AR	AR	AR	AR
37	1012781	TRANSMISSION ASS'Y 2.10:1 NOTE 3	AR	AR	AR	AR
37	1001512	TRANSMISSION ASS'Y 2.57:1 NOTE 3	AR	AR	AR	AR
37	1001513	TRANSMISSION ASS'Y 2.91:1 NOTE 3	AR	AR	AR	AR
38	91685	COUPLING PROP. 1" SHAFT x 4" DIA	AR	AR	AR	AR
38	91686	COUPLING PROP. 1 1/8" SHAFT x 4" DIA	AR	AR	AR	AR
38	91687	COUPLING PROP. 1 1/4" SHAFT x 4" DIA	AR	AR	AR	AR



MARINE  
ENGINESPARTS  
CATALOG

FIG. 10 FLYWHEEL HOUSING ASSEMBLY

QUANTITY

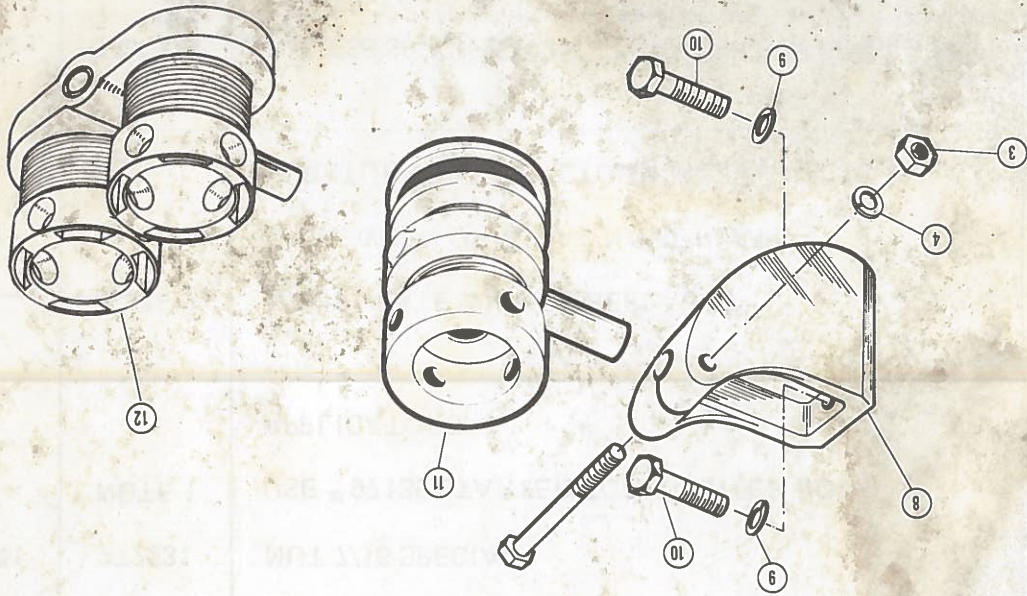
305

350

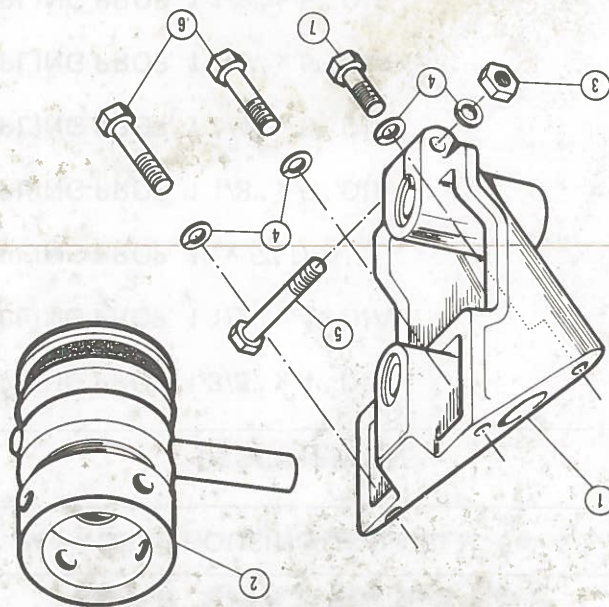
ITEM	PART NO.	DESCRIPTION	RH	LH	RH	LH
38	91688	COUPLING PROP. 1 3/8" x 4" DIA	AR	AR	AR	AR
38	91689	COUPLING PROP. 1 1/2" x 4" DIA	AR	AR	AR	AR
38	91690	COUPLING PROP. 1" x 5" DIA	AR	AR	AR	AR
38	91691	COUPLING PROP. 1 1/8" x 5" DIA	AR	AR	AR	AR
38	91692	COUPLING PROP. 1 1/4" x 5" DIA	AR	AR	AR	AR
38	91693	COUPLING PROP. 1 3/8" x 5" DIA	AR	AR	AR	AR
38	91694	COUPLING PROP. 1 1/2" x 5" DIA	AR	AR	AR	AR
38	91695	COUPLING PROP. 1 3/4" x 5" DIA	AR	AR	AR	AR
38	91696	COUPLING PROP. 2" x 5" DIA	AR	AR	AR	AR
39	2000090	SET SCREW	2	2	2	2
40	103322	WASHER 7/16 LOCK	4	4	4	4
41	272231	NUT 7/16 SPECIAL	4	4	4	4
NOTE 1 USE # 97135 STARTER FOR STARTER DOWN APPLICATORS.						
NOTE 2 NAME PLATE WILL BE REPLACED ONLY WHEN ORIGINAL NAME PLATE IS RETURNED TO FACTORY						
NOTE 3 UNLESS SPECIFIED ALL TRANSMISSIONS WILL BE SHIPPED FOR L.H. ENGINE. ROTATION MUST BE SPECIFIED FOR 2:10:1 GEARS THEY ARE NOT BI-ROTATIONAL						



FIGURE 11



REAR MOUNTS



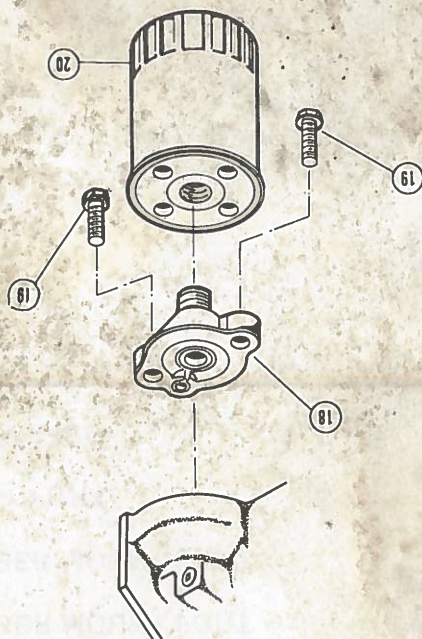
FRONT MOUNTS



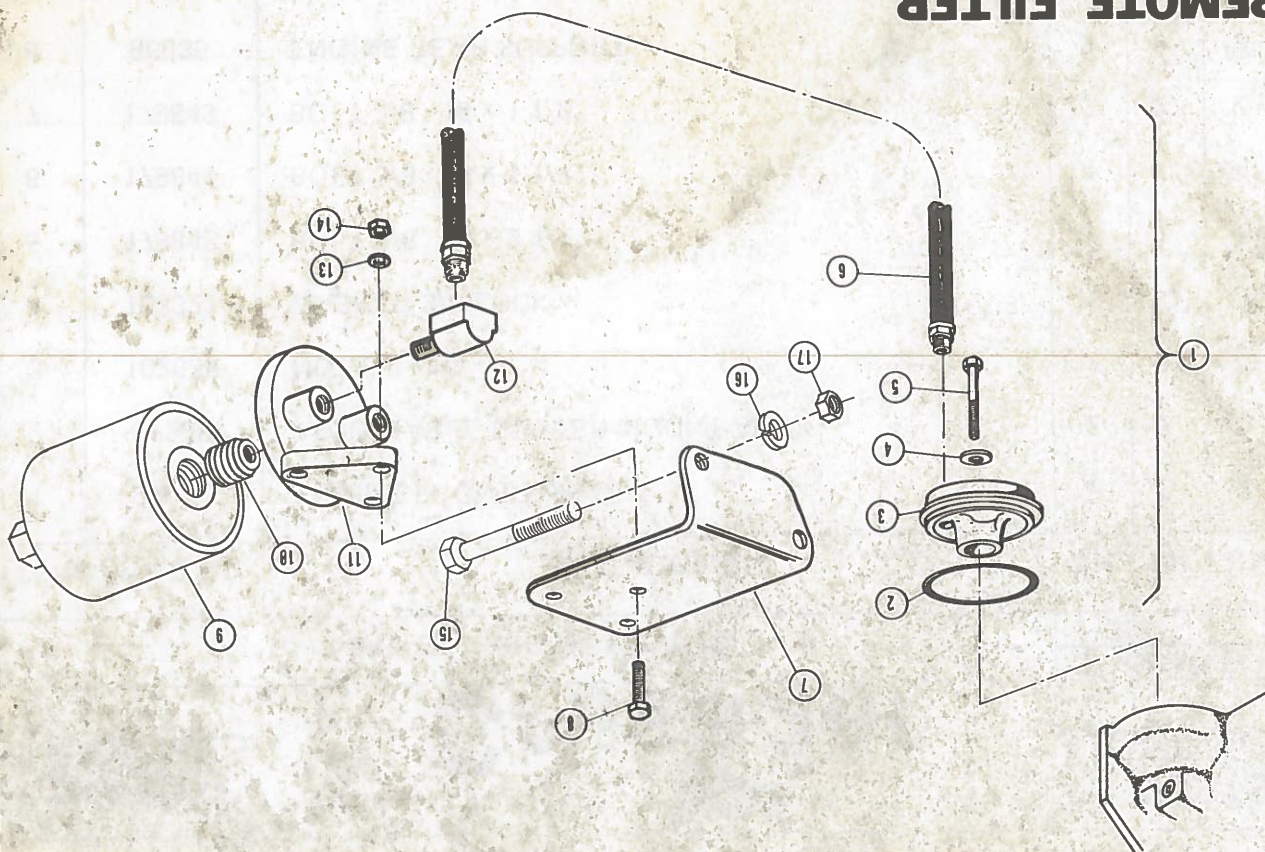
ITEM	PART NO.	DESCRIPTION	RH	LH	RH	LH
1	97337	ENGINE FRONT SUPPORT	2	2	2	2
2	97238	ADJUSTABLE RUBBER MOUNT ASS'Y	2	2	2	2
3	102635	NUT 3/8 - 16	4	4	4	4
4	103321	WASHER 3/8 LOCK	10	10	10	10
5	179848	BOLT 3/8 - 16 x 2 1/4"	2	2	2	2
6	179841	BOLT 3/8 - 16 x 1 1/4"	4	4	4	4
7	179843	BOLT 3/8 - 16 x 1 1/2"	2	2	2	2
8	96935	ENGINE REAR SUPPORT	2	2	2	2
9	103322	WASHER 7/16 LOCK	4	4	4	4
10	179860	BOLT 7/16 - 14 x 1 1/4"	4	4	4	4
11	97238	ADJUSTABLE RUBBER MOUNT PORT	1	1	1	1
11	96974	ADJUSTABLE RUBBER MOUNT STBD	1	1	1	1
12	97514	DUAL MOUNT ASS'Y PORT	1	1	1	1
12	97450	DUAL MOUNT ASS'Y STBD	1	1	1	1



# STANDARD FILTER



## REMOTE FILTER





MARINE  
ENGINESPARTS  
CATALOG

FIG. 12 STANDARD AND REMOTE OIL FILTER ASSEMBLY

QUANTITY	
305	350

ITEM	PART NO.	DESCRIPTION	RH	LH	RH	LH
1	22026	REMOTE OIL FILTER KIT	AR	AR	AR	AR
2	20156	O - RING	1	1	1	1
3	96530	ADAPTER	1	1	1	1
4	116095	WASHER FLAT SEALING	1	1	1	1
5	179896	BOLT 1/2 - 13 x 3 3/4	1	1	1	1
6	20780	HOSE ASS'Y	2	2	2	2
7	97342	BRACKET	1	1	1	1
8	179820	BOLT 5/16 - 18 x 1 1/4	3	3	3	3
9	9002514	OIL FILTER, REMOTE	1	1	1	1
10	97292	NIPPLE	1	1	1	1
11	719571	ADAPTER	1	1	1	1
12	9432250	ELBOW	1	1	1	1
13	103320	WASHER 5/16 LOCK	3	3	3	3
14	102634	NUT 5/16 - 18	3	3	3	3
15	179824	BOLT 5/16 - 18 x 1 3/4	2	2	2	2
16	103320	WASHER 5/16 LOCK	2	2	2	2
17	102634	NUT 5/16 - 18	2	2	2	2
18	20615	ADAPTER	1	1	1	1
19	30170	BOLT	2	2	2	2
20	20104	OIL FILTER, STD.	1	1	1	1



FIGURE 13

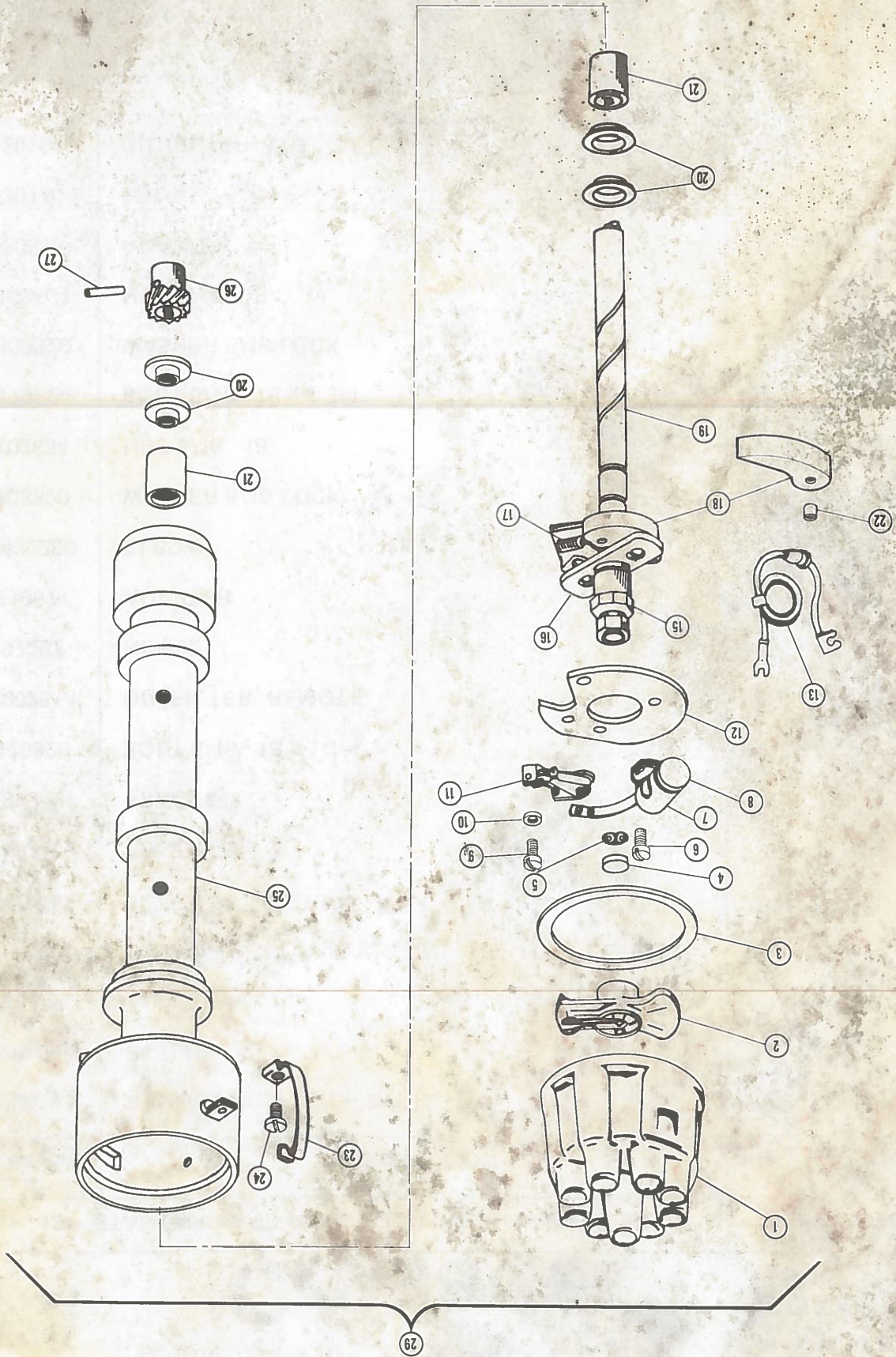




FIG. 13 PRESTOLITE DISTRIBUTOR #41050

QUANTITY  
305 350

ITEM	PART NO.	DESCRIPTION	RH	LH	RH	LH
1	41052	CAP	1	1	1	1
2	41059	ROTOR	1	1	1	1
3	41061	GASKET	1	1	1	1
4	NSS	FELT	—	—	—	—
5	NSS	SNAP RING	—	—	—	—
6	NSS	SCREW	—	—	—	—
7	NSS	CONDENSER CLAMP	—	—	—	—
8	41057	CONDENSER ASS'Y	1	1	1	1
9	NSS	SCREW	—	—	—	—
10	NSS	WASHER	—	—	—	—
11	41058	POINT SET	1	1	1	1
12	41056	ARMATURE PLATE ASS'Y	1	1	1	1
13	41055	LEAD ASS'Y	1	1	1	1
15	NSS	CAM ASS'Y	—	—	—	—
16	NSS	LIMIT PLATE	—	—	—	—
18	NSS	SPRING	—	—	—	—
18	NSS	WEIGHT	—	—	—	—
19	41060	SHAFT ASS'Y	1	1	1	1
20	41054	WASHER BUSHING & GEAR KIT	1	1	1	1
21	41051	BUSHING KIT	1	1	1	1
22	NSS	BUSHING	—	—	—	—
23	41053	CLAMP	2	2	2	2
24	NSS	SCREW	—	—	—	—
25	41050	HOUSING ASS'Y COMPLETE	1	1	1	1
26	41054	GEAR & BUSHING KIT	1	1	1	1



# PARTS CATALOG



## MARINE ENGINES

FIG. 13 PRESTOLITE DISTRIBUTOR 41050

ITEM	PART NO.	DESCRIPTION	QUANTITY	
			RH	LH

27	NSS	PIN	—	—
----	-----	-----	---	---

28	97423	SPARK PLUG WIRE SET	1	1
----	-------	---------------------	---	---

28	97454	SPARK PLUG WIRE SET IGN SUPR.	AR	AR
----	-------	-------------------------------	----	----

29	41050	PRESTOLITE DISTRIBUTOR ASS'Y	1	1
----	-------	------------------------------	---	---

### NOTE 1

PART NOS. 15, 16, 17, 18, 19, 22 ARE AVAILABLE ONLY IN ASS'Y #41060

PART NOS. 20, 26, 27

ARE AVAILABLE AS KIT #41054

PART NOS. 20, 21

AVAILABLE AS KIT #41051

FOR DELCO DISTRIBUTOR

PARTS REFER TO PREVIOUS PARTS

MANUAL OR CONTACT THE PARTS

DEPARTMENT OF CRUSADER MARINE

### NOTE 2





<div>MARINE ENGINES</div> <div>Crusader</div> <div>PARTS CATALOG</div>														<div>QUANTITY</div> <div>305350</div>													
ITEM		PART NO.		DESCRIPTION										RH	LH	RH	LH										
NOTES																											
																											



FIGURE 14

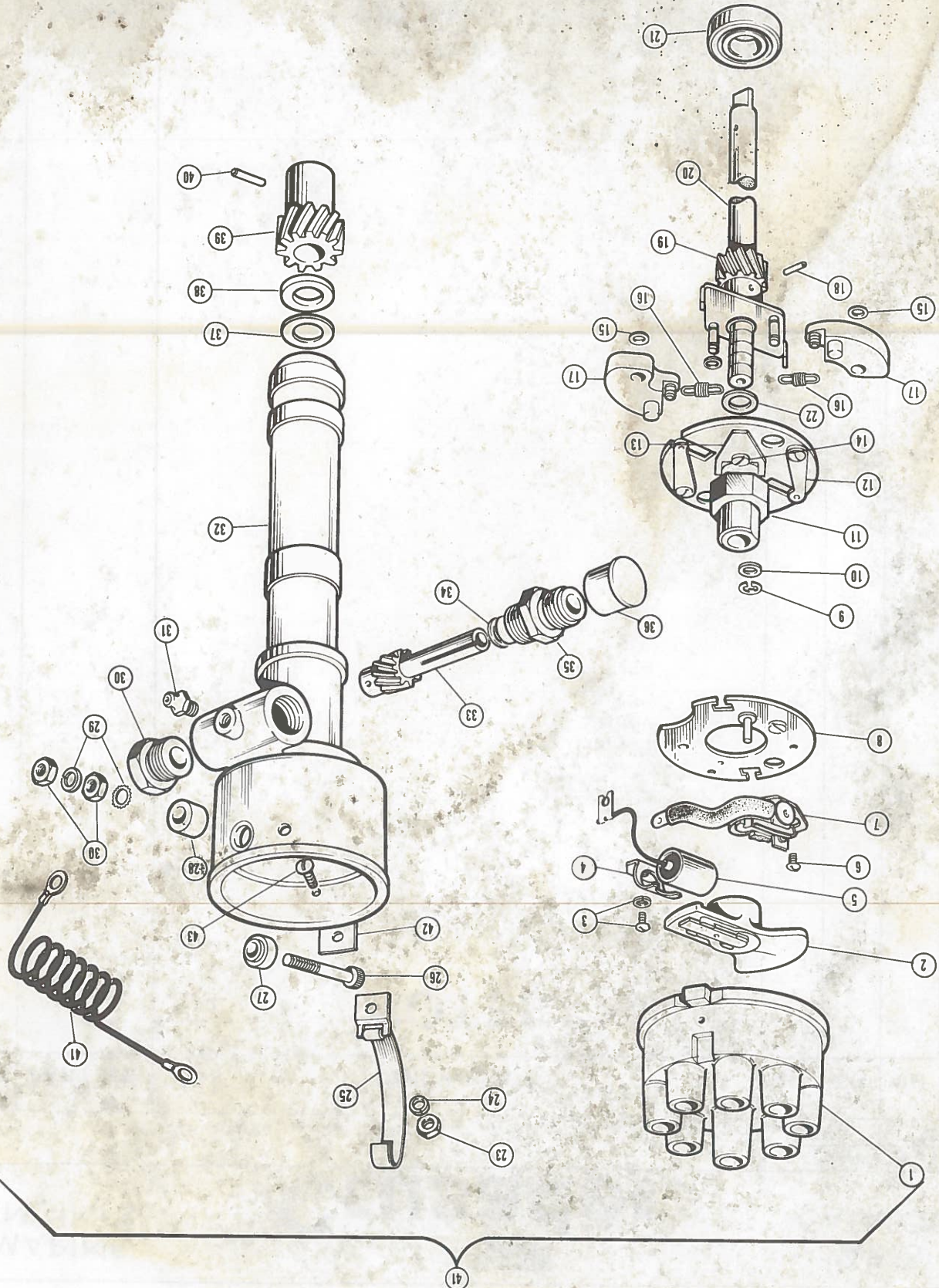




FIG. 14 MALLOY TACH. DRIVE DISTRIBUTOR ASSEMBLY

QUANTITY

305

350

ITEM	PART NO.	DESCRIPTION	RH	LH	RH	LH
1	20222	CAP	1	1	1	1
2	20223	ROTOR	1	1	1	1
3	37028	SCREW & WASHER ASS'Y	1	1	1	1
4	38038	CONDENSER CLAMP	1	1	1	1
5	12530	CONDENSER	1	1	1	1
6	37031	SCREW	1	1	1	1
7	20117	CONTACT SET	1	1	1	1
8	37021	ARMATUR PLATE ASS'Y	1	1	1	1
9	37039	CLIP	1	1	1	1
10	37048	WASHER	1	1	1	1
11	37052	CAM, ADVANCE PLATE ASS'Y	1	1	1	1
12	37058	ADVANCE PLATE ASS'Y	2	2	2	2
13	37059	CLAMP	1	1	1	1
14	37060	SCREW	1	1	1	1
15	37041	WASHER	2	2	2	2
16	37050	SPRING	2	2	2	2
17	37020	WEIGHT	2	2	2	2
18	37030	PIN	1	1	1	1
19	37036	GEAR	1	1	1	1
20	37053	SHAFT ASS'Y	1	1	1	1
21	37032	BEARING	1	1	1	1
22	N.A.	WASHER	1	1	1	1
23	37025	NUT	2	2	2	2
24	37026	WASHER	2	2	2	2
25	37054	CLIP	2	2	2	2





FIG. 14 MALLOY TACH. DRIVE-DISTRIBUTOR ASSEMBLY

ITEM	PART NO.	DESCRIPTION	QUANTITY			
			RH	LH	RH	LH
26	37029	SCREW PRIMARY TERMINAL	1	1	1	1
27	37027	INSULATOR	1	1	1	1
28	37027	INSULATOR	1	1	1	1
29	37026	WASHER 8 LOCK	2	2	2	2
30	37025	NUT # 8 - 32	2	2	2	2
31	37037	GREASE FITTING	1	1	1	1
32	37044	HOUSING	1	1	1	1
33	37047	TACH. SHAFT & GEAR ASS'Y	1	1	1	1
34	37035	WASHER	1	1	1	1
35	37034	COUPLING	1	1	1	1
36	37046	CAP	1	1	1	1
37	37042	SHIM	1	1	1	1
38	37043	WASHER	1	1	1	1
39	92137	GEAR	1	1	1	1
40	37045	PIN	1	1	1	1
41	96856	LEAD ASS'Y	1	1	1	1
42	37049	NAME PLATE	1	1	1	1
40	97423	SPARK PLUG WIRE SET	1	1	1	1
40	97454	SPARK PLUG WIRE SET IGN SUPR.	AR	AR	AR	AR
41	96309	DISTRIBUTOR ASS'Y	1	1	1	1



<div>MARINE ENGINES</div>		<div>Crusader</div>		<div>PARTS CATALOG</div>	
		QUANTITY		305	
				350	
ITEM	PART NO.	DESCRIPTION			
		RH	LH	RH	LH
NOTES					



FIGURE 15

