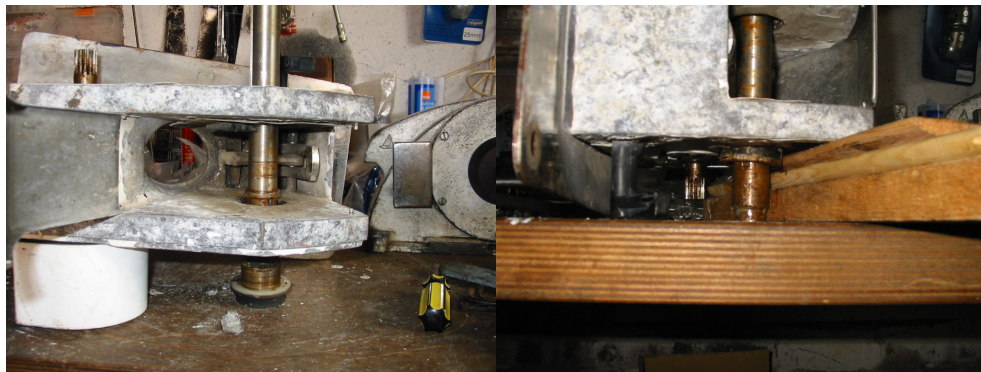


Seawolf Mainshaft Bearing Replacement

- Remove the clutch nut.
- Remove the drum, if it is not possible to remove the drum at this stage, don't be concerned as it can be removed later attached to the shaft.
- Remove the Gear train cover
- Undo the socket head cap screw holding on the main shaft gear and remove the gear and washer item 17.
- Use a mallet to drift the main shaft from main shaft gear end, so that the shaft (and Drum), are removed from the drum side of the windlass.
- The gipsy and clutch cones can be removed, leaving access to the spacers.
- The port spacer is plain and can be tapped into the centre of the windlass for removal from the bearing if necessary.
- To remove the starboard spacer, use a flat bladed screwdriver to wedge between the spacer and the main case or use a drift passing through the port bearing.
- Now remove both bearings with a drift, supporting main case as shown.



-
- Fit new bearings.



-