

**SEASTAR
SOLUTIONS**

640 North Lewis Road
Limerick, PA 19468 USA
610-495-7011
www.seastarsolutions.com

Installation Instructions DUAL STATION EXCHANGER, GEAR UNIT.

READ THESE INSTRUCTIONS BEFORE COMMENCING THE INSTALLATION.

This all mechanical unit combines the actions from dual stations to single output to the gearbox.

Part No.
207575

CABLE CONNECTION

When used with Single Lever Controls to operate GEAR, mount the cables in positions marked "B" on the chassis as shown in figures 1 & 3.

The unit can be mounted in any position i.e. horizontally, vertically etc.

Position the unit so as to give the absolute minimum number of cable bends (minimum bend radius 200mm.) throughout the entire system.

It is advisable to secure cables on route.

1. Mount the unit using the 3 holes 6.5 dia. provided in the large flange.
Avoid distortion of the unit when securing.
2. Set control heads in neutral position, (Control heads see separate instructions)
route cables to unit.
Remove split pins, strap and rollers figure 1.
Secure cable hubs to unit using plastic cable clamps, pan head M5 screws and nuts provided, in position "B" figure 1 and as shown in figure 2.
Cables to pass behind the selector plate.
3. Lock the input beam using two 5 mm dia. pins (not included) in the neutral (central) position as shown in figure 1, enter pins from the rear of the unit.
Fit terminal eye end to cable rod end so as to equalize the lost motion.
Connect cables to input beam and replace rollers, strap and secure with split pins.

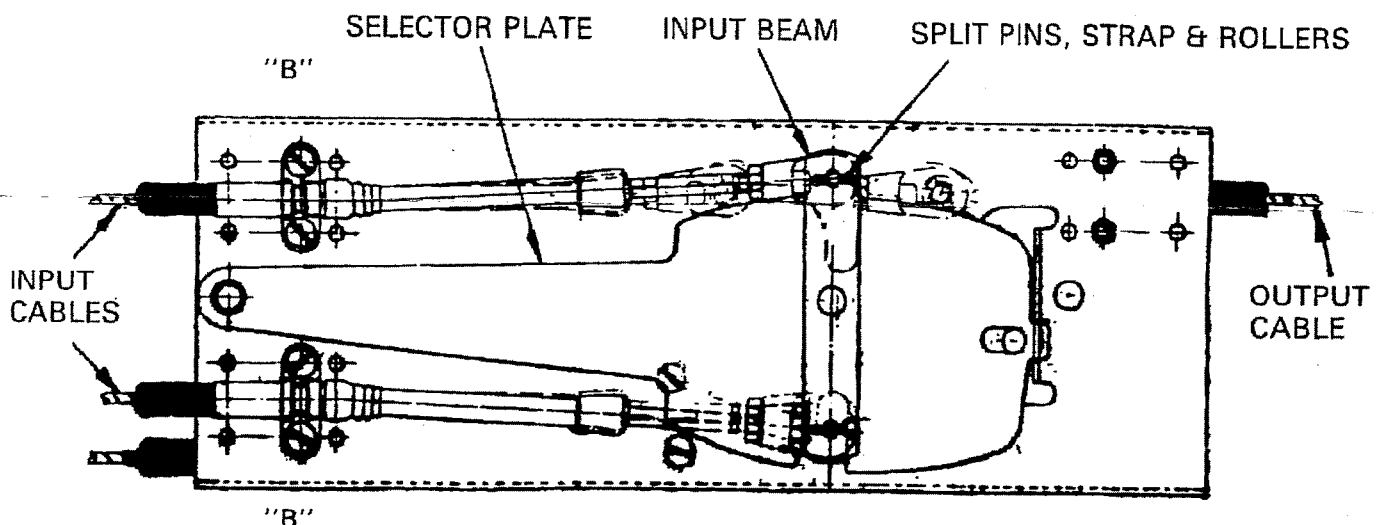


FIGURE 1. FRONT VIEW OF UNIT IN NEUTRAL POSITION

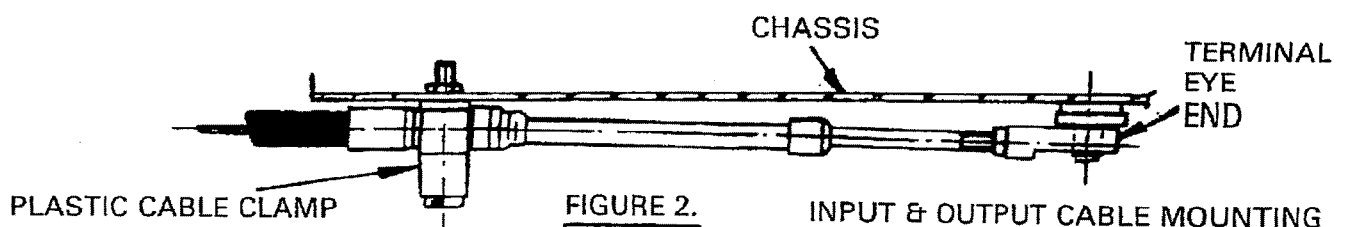


FIGURE 2. INPUT & OUTPUT CABLE MOUNTING

4. Route output cable to the gear lever.
With input beam still locked remove split pin from output lever.
Secure cable hub to unit using plastic cable clamp, pan head M5 screws and nuts provided, in position "B" figure 3 and as shown in figure 2.
Fit the remaining terminal eye end to cable rod end so as to equalize the cable lost motion.
Connect cable to output lever, secure with split pin.

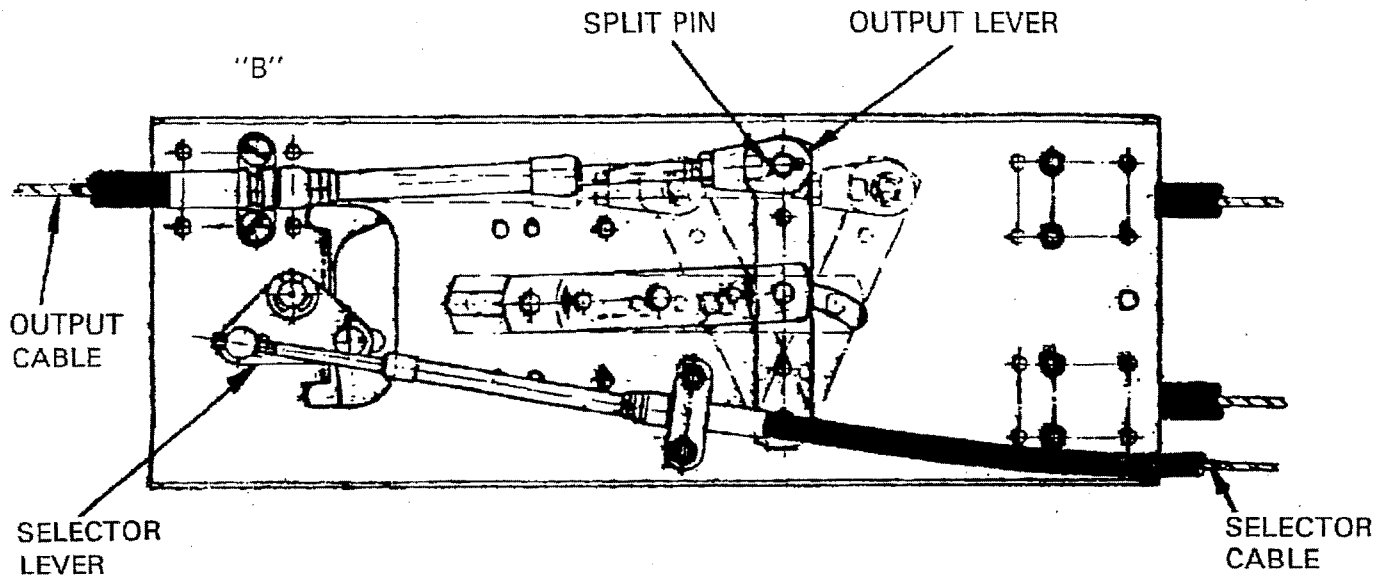


FIGURE 3. REAR VIEW OF UNIT IN NEUTRAL POSITION

5. Route selector cable to unit shown in figure 3. (Selector control head see separate instructions).
Secure cable hub to unit using plastic cable clamp, countersunk head M5 screws and nuts provided, in position as shown in figures 3 and 4.
Fit terminal pivot pin to cable rod end so as to equalize the cable lost motion.
Connect cable to selector lever in position as shown in figure 3 and secure with split pin.
Check the action of the station selector control.

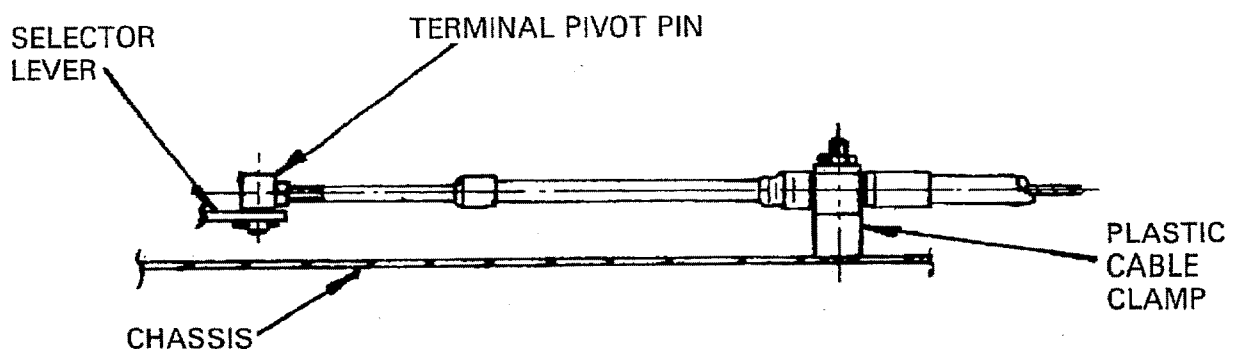


FIGURE 4. SELECTOR LEVER CABLE MOUNTING

6. Connect the output cable to the gear lever as instructed in the separate engine kit installation instructions, taking care to equalize cable lost motion.
7. When both GEAR & THROTTLE UNITS have been installed remove all setting pins and check the function of the system.





SEASTAR
SOLUTIONS

640 North Lewis Road
Limerick, PA 19468 USA
610-495-7011
www.seastarsolutions.com

Installation Instructions

DUAL STATION EXCHANGER, THROTTLE UNIT

READ THESE INSTRUCTIONS BEFORE COMMENCING THE INSTALLATION.

This all mechanical unit combines the actions from dual stations to single output to the throttle.

Part no.
207594

CABLE CONNECTION

When used with Single Lever Controls to operate THROTTLE, mount the cables in positions marked "A" on the chassis as shown in figure 1 and 3 for PULL to open throttle, and "C" positions for PUSH to open throttle.

The unit can be mounted in any position i.e. horizontally, vertically etc. Position the unit so as to give the absolute minimum number of cable bends (minimum bend radius 200mm) throughout the entire system.

It is advisable to secure cables on route.

1. Mount the unit using the 3 holes 6.5 mm dia. provided in the large flange. Avoid distortion of the unit when securing.
2. Set control heads in neutral position (Control heads see separate instructions) route cables to unit.
Remove split pins from input beam figure 1.
Secure cable hubs to unit using plastic cable clamps, pan head M5 screws and nuts provided, in required position, described above, and as shown in figure 2.
3. Lock the input beam using two 5 mm dia. pins (not included) in the required position. Fit terminal eye end to cable rod ends so as to equalize the lost motion. Connect cables to input beam, secure with split pins.

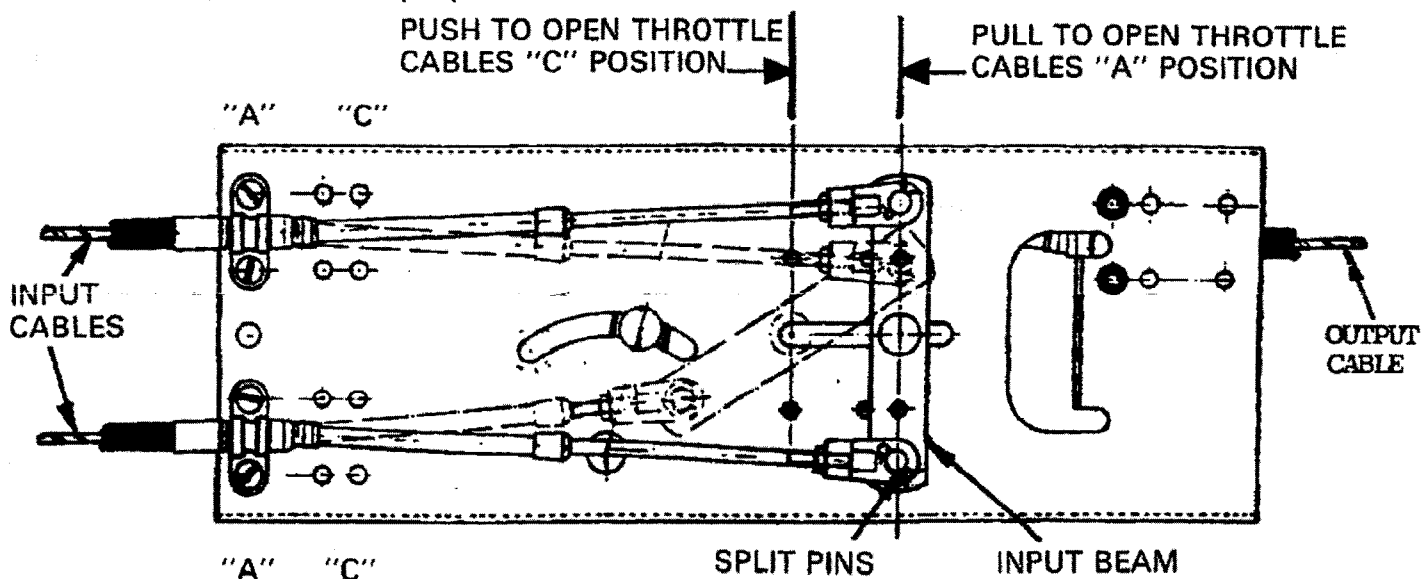


FIGURE 1.

FRONT VIEW OF UNIT IN IDLE POSITION.

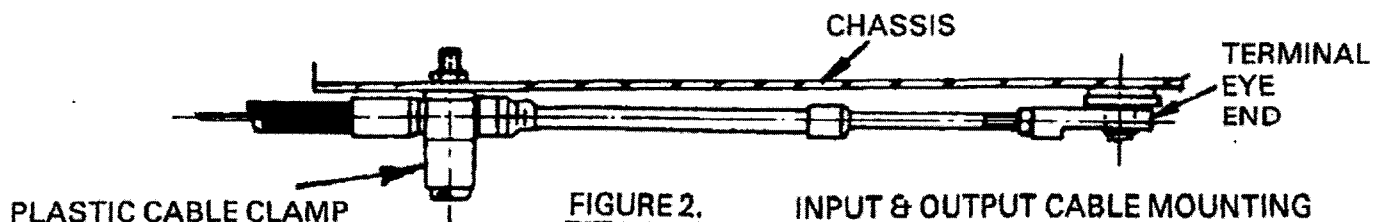


FIGURE 2.

INPUT & OUTPUT CABLE MOUNTING

4. Route output cable to the throttle lever.
With input beam still locked remove split pin from out put lever. Secure cable hub to unit using plastic cable clamp, pan head M5 screws and nuts provided, in required position, described overleaf and as shown in figure 2. Fit terminal eye end to cable rod end so as to equalize the cable lost motion. Connect cable to output lever, secure with split pin.

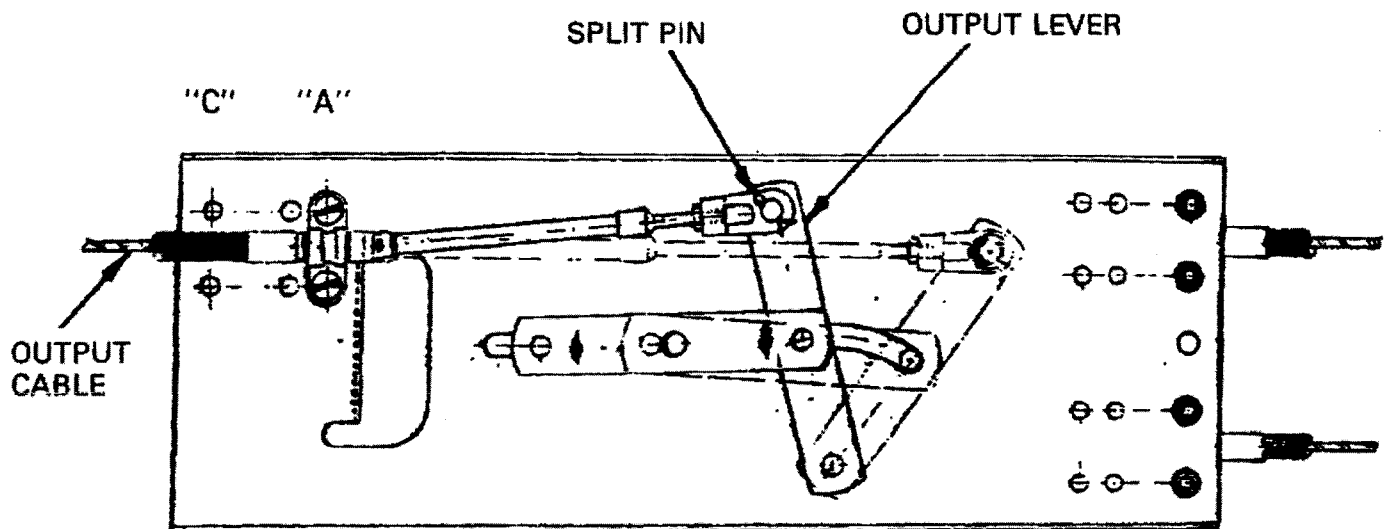
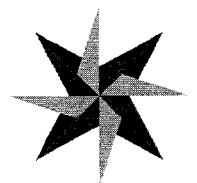


FIGURE 3. REAR VIEW OF UNIT IN IDLE POSITION

5. Connect the output cable to the throttle lever as instructed in the separate engine kit installation instructions, taking care to equalize cable lost motion.
6. When both GEAR & THROTTLE UNITS have been installed remove all setting pins and check the function of the systems.



We reserve the right to make material and specification changes without notice.



SEASTAR
SOLUTIONS

INSTALLATION MANUAL

Manual # 204994

Rev 5

05/2013

Page 1 of 2

INSTALLER: THESE INSTRUCTIONS CONTAIN IMPORTANT SAFETY INFORMATION AND MUST BE FORWARDED TO THE BOAT OWNER.

204993 DUAL STATION SELECTOR KIT

USE WITH MODEL D.S. DUAL STATION KITS WHEN FITTED WITH LARGE
PLATE KIT A.894

GENERAL DESCRIPTION

This selector is used to control the position of the Latch Plate fitted to the gear select D.S. Unit. It may be fitted with one or two cables and can be used on single or dual engine installations.

INSTALLATION

1. Choose a position for the control which gives a clear path for the cables and provides adequate clearance for operating the control.
2. Drill mounting holes as shown in Fig. 2.

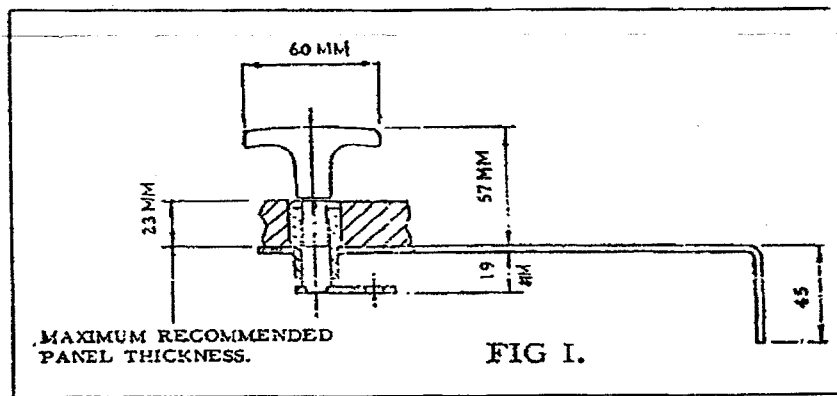
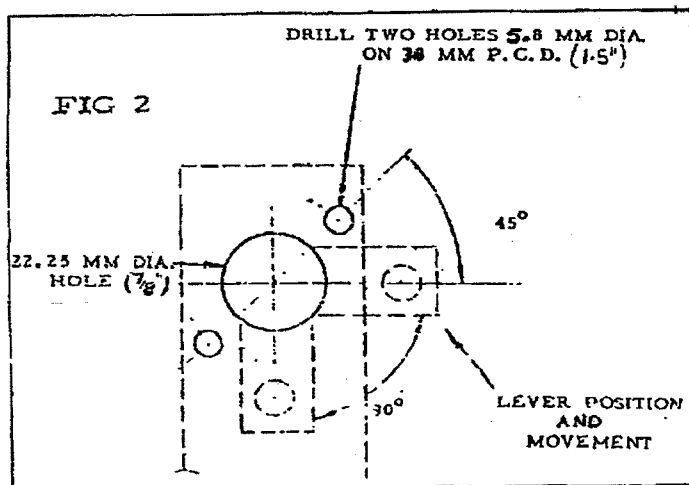


FIG 1.



3. Fit terminal(s) Item 8, to cable rod end(s) and slide cable(s) into location slot in support bracket. Secure in place using Items 11, 12, 13 & 14. (See Fig. 3).

IF ONLY ONE CABLE IS USED, (I.E. SINGLE ENGINE INSTALLATIONS) ITEMS 11 TO 14 SHOULD BE ASSEMBLED IN RELEVANT HOLES TO KEEP CABLE MOVEMENT TO A MINIMUM

4. Connect cable(s) to lever using pin Item 9, but without circlip Item 10 and loosely fit handle Item 6 to shaft.
If only one cable is used, it must be assembled above the lever.
5. Adjust position of terminal at each end of cable until the swing of the latch plate is equal about the centre line for 90° rotation of the selector handle (from one stop to another).
6. Tighten locknuts on the cable and assemble circlip Item 10 to retain terminal. There are two circlip grooves on the terminal pin for single or twin cables.
7. Remove the handle and mount selector in position and secure using fixings provided.
THE TWO LONG FIXING SCREWS ARE LONG ENOUGH TO ACT AS STOPS FOR THE LEVER.
8. Secure T-Handle using Screw Item 7.

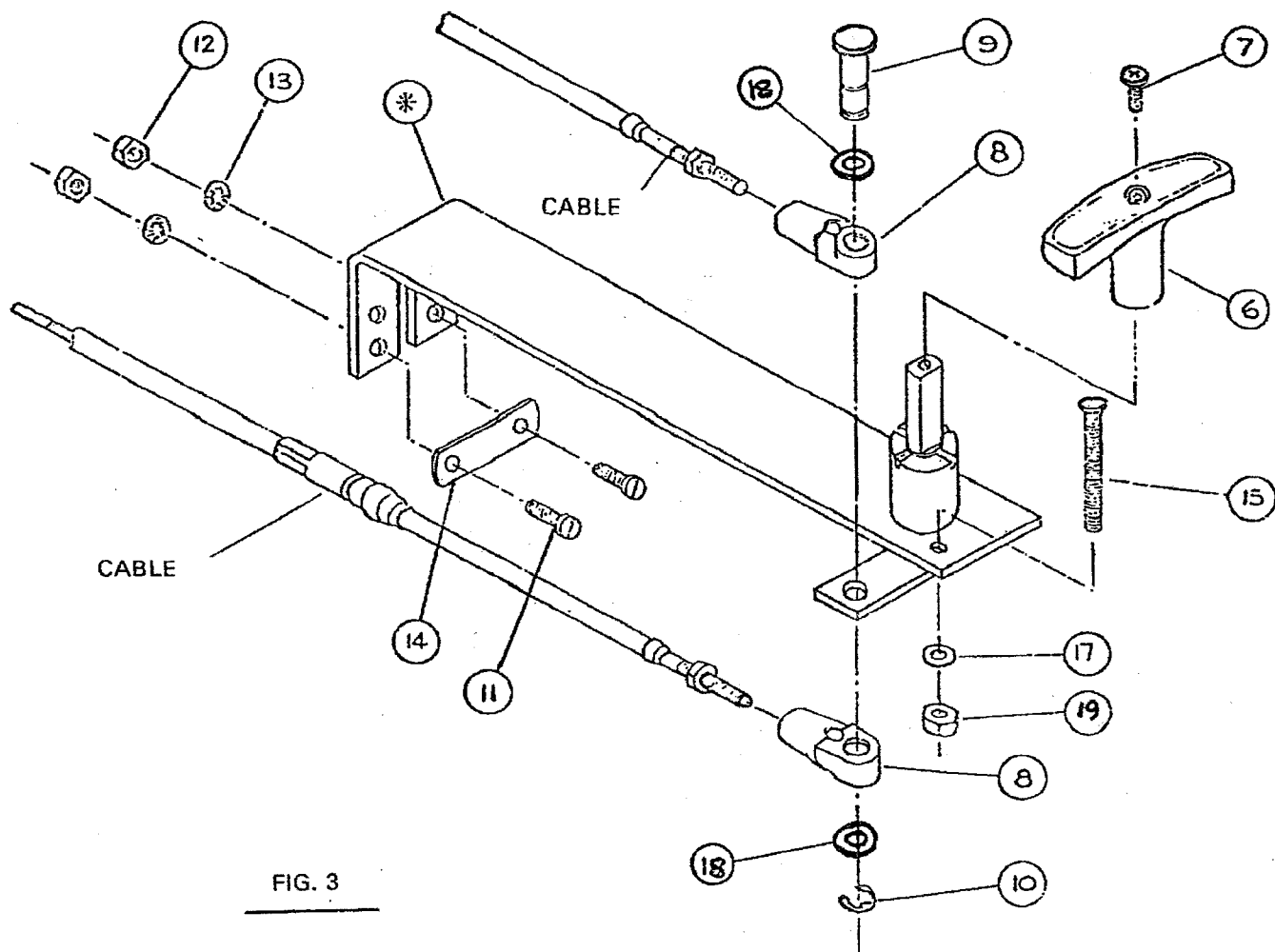


FIG. 3

Item	Description	Qty.	Item	Description	Qty.
2	Boss & Bracket Assy.	1	11	Screw	2
3	Shaft & Lever Assy.	1	12	Nut	2
4	Spring	1	13	Washer S'proof	2
5	Roll Pin	1	14	Shim	1
6	T-Handle	1	15	Screw	2
7	Screw	1	16		
8	Terminal Cable	2	17	Washer	2
9	Pin	1	18	Washer	2
10	Circlip	1	19	Nut	2

USA Sales/Support
SeaStar Solutions
640 North Lewis Road
Limerick, PA 19468
610-495-7011
www.seastarsolutions.com

Overseas Sales/Support
SeaStar Solutions
International Sales and
Marketing
Tel: +44 1202 828010
www.seastarsolutions.com

We reserve the right to make material and specification changes without notice.