



BESTWAY® MOTOR YACHT 46' & 50'

[†]Patent Pending
BWY 46B & BWY 50B

Bestway Yacht

The Best Choice

Particulars

Bestway Motor Yacht 46'

Length Overall.....	47'6"
Breadth.....	14'6"
Draft.....	3'6"
Fuel Capacity.....	640 gal.
Water Capacity.....	210 gal.
Displacement.....	28,600 lbs.
Speed, maximum	500hp..... 18knots
	600hp..... 20knots
	700hp..... 22knots
Sleeping Capacity.....	6

Bestway Motor Yacht 50'

Length Overall.....	52'6"
Breadth.....	14'6"
Draft.....	3'9"
Fuel Capacity.....	780 gal.
Water Capacity.....	262 gal.
Displacement.....	33,000 lbs.
Speed, maximum	500hp..... 17knots
	600hp..... 19knots
	700hp..... 21knots
Sleeping Capacity.....	6

All particulars and specifications mention in this brochure are subject to change without prior notice.

Standard Equipment

Engines & Propulsion

- ◇ Twin 255hp VOLVO PENTA TAMD 60C & TDMG506 transmission
- ◇ Dual station control system and instrument panel
- ◇ Stainless Steel shaft (2)
- ◇ Exhaust system with mufflers
- ◇ Bronze propeller (2)
- ◇ Bronze struts (2)
- ◇ E/R air inlet and outlet with blowers
- ◇ Audible engine alarm system
- ◇ Bestway Motor Yacht 50' equipped with: Optional engine control station in aft fishing cockpit

Deck Fittings

- ◇ FRP radar arch
- ◇ Stainless steel plow anchor
- ◇ Stainless steel anchor bow roller
- ◇ Stainless steel rope deck pipe
- ◇ Stainless steel fore bitt with cleat
- ◇ Stainless steel cleat (6)
- ◇ Stainless steel chock (4)
- ◇ Stainless steel stern flagstaff with socket
- ◇ FRP dodger board around aft & cabin top
- ◇ Teak & FRP swimming-platform
- ◇ Teak handrail and stainless steel stanchion
- ◇ Solid FRP with stainless steel half round bar sheer guard
- ◇ Stainless steel escape hatch (2)
- ◇ Sliding windows with screen: safety glass tinted with FRP outside frame
- ◇ Stainless steel port light with screen (7)
- ◇ Smoked acrylic windscreen
- ◇ Deck wash down
- ◇ 50' Cockpit Motor Yacht equipped with: Fishing rod holder (6)
- Chock with cleat in fishing cockpit (4)
- Bait tank (1)
- Stainless Steel outside grips (6)

BESTWAY MOTOR YACHT 46' & 50'

Electrical System

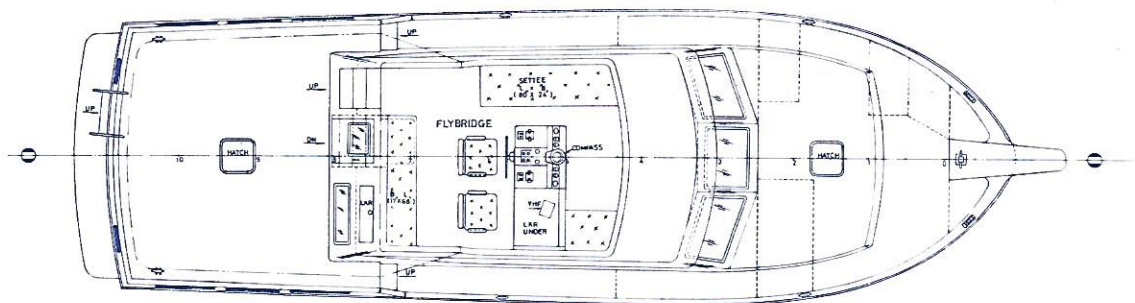
- ◇ AC & DC master control panel
- ◇ MARINCO 110V or 220V dockside power inlet
- ◇ KEYSTONE heavy duty battery 200amp (3)
- ◇ COLE-HERSEE battery selector switch
- ◇ Grounding twist-lock for radar arch
- ◇ PROFESSIONAL battery charger
- ◇ MARINCO portable telephone connection device
- ◇ RULE bilge automatic switch (6)
- ◇ High bilge automatic switch
- ◇ AFI single trumpet horn
- ◇ AMERICAN BOSCH windshield wiper
- ◇ GUEST battery isolator (2)
- ◇ Stern light
- ◇ Masthead light
- ◇ Side light
- ◇ Interior lights, 12V-110V or 220V, throughout
- ◇ Duplex electrical outlet, 12V/110V or 220V throughout

Steering System

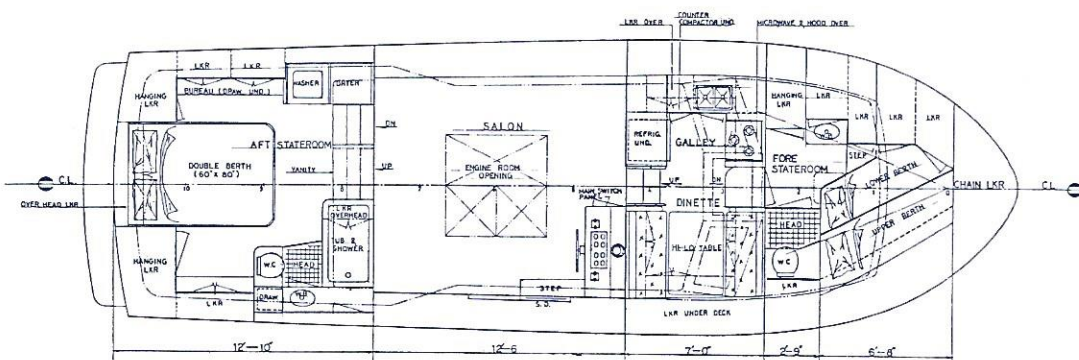
- ◇ HYNAUTIC or TELEFLEX hydraulic steering
- ◇ Dual steering station
- ◇ Stainless steel rudders
- ◇ Teak wheel for lower station and stainless steel rim for upper station
- ◇ Emergency tiller

Accommodation

- ◇ Splined teak and holly soles in fwd & aft stateroom, salon
- ◇ Heads (2) FRP built-up, complete with shower and blower
- ◇ High craftsmanship quality louvers or lattice hing doors, drawers and other joineries
- ◇ Finest quality cushions, mattress, curtains and mirrors
- ◇ Quality door lock sets and door latch sets



BESTWAY MOTOR YACHT 46' FLYBRIDGE LAYOUT



BESTWAY MOTOR YACHT 46' INTERIOR LAYOUT

1986 SPECIFICATIONS

- ◇ Flybridge, comfortable built-in furniture and non-skid or teak deck
- ◇ Wing doors in aft deck and door to flybridge
- ◇ 50' Cockpit Motor Yacht equipped with: 6'6" aft fishing cockpit

Fuel & Water System

Bestway Motor Yacht 46' :

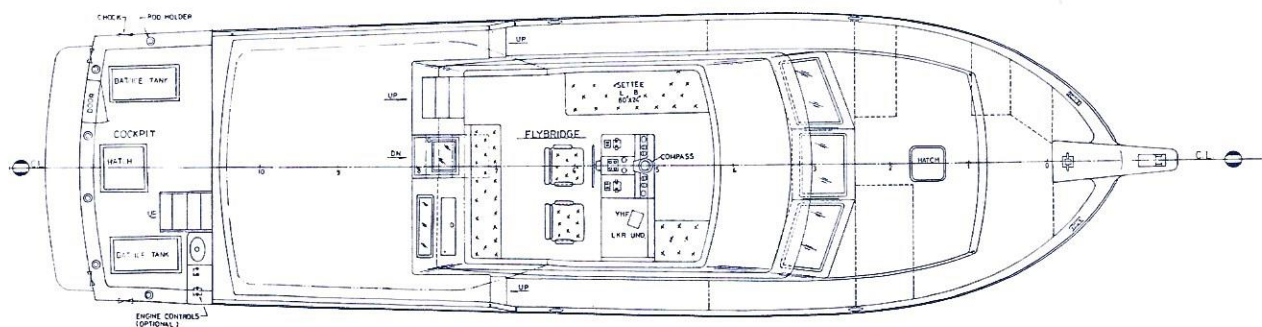
- ◇ 640-gallon mild steel fuel oil tank coated with FRP (3)
- ◇ 210-gallon stainless steel water tank
- ◇ RULE automatic bilge pump 1500g/h (1), 800g/h (2)
- ◇ Wash basin (2)

Bestway Motor Yacht 50'

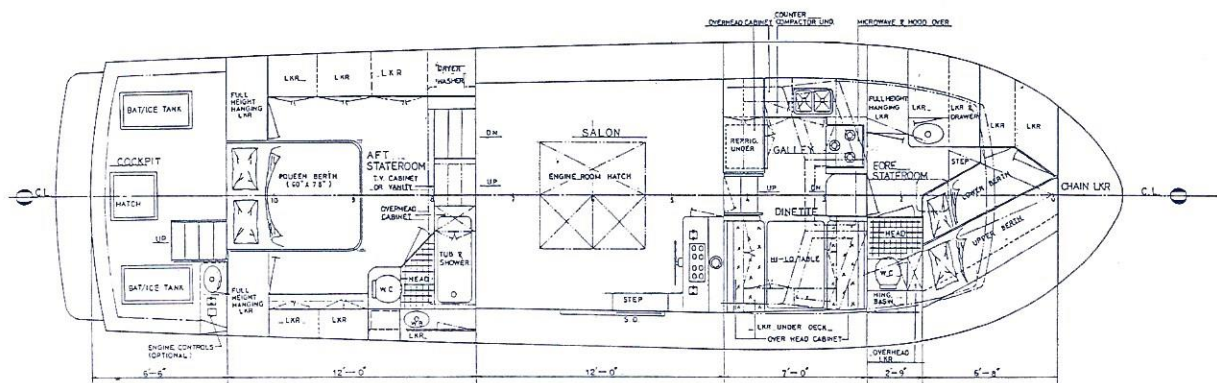
- ◇ 780-gallon mild steel: fuel oil tank coated with FRP (5)
- ◇ 262-gallon stainless steel water tank
- ◇ RULE automatic bilge pump 1500g/h (2), 800g/h (2)
- ◇ Wash basin (3)

Standard on both models:

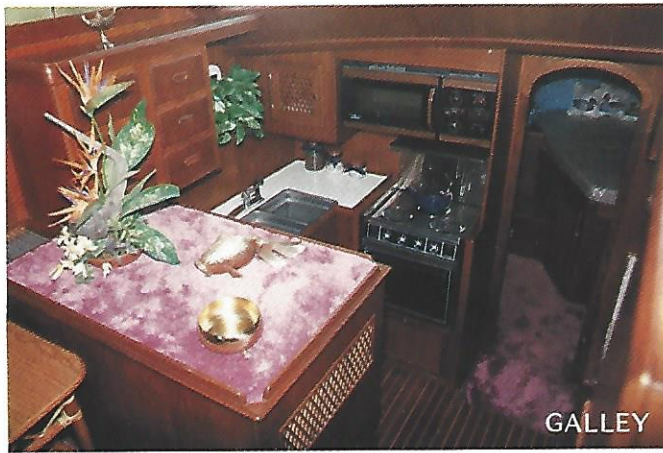
- ◇ SHIELDS fuel lines, marine flexible fuel-feed & vent lines
- ◇ MARCRA fuel oil gauge (2)
- ◇ Fuel manifold, with filters and cross over valve
- ◇ JABSCO pressure maximum pump for fresh water
- ◇ Ball valve for raw water inlet and outlet water circulation system
- ◇ Dockside water connection
- ◇ 15-gallon hot water heater
- ◇ Hot and cold water system
- ◇ Galley sink
- ◇ 45-gallon FRP holding tank
- ◇ PAR marine toilet (2)
- ◇ Deck waste fitting
- ◇ Pressure pump
- ◇ PAR macerator pump
- ◇ RULE waste water pump 400g/h (2)



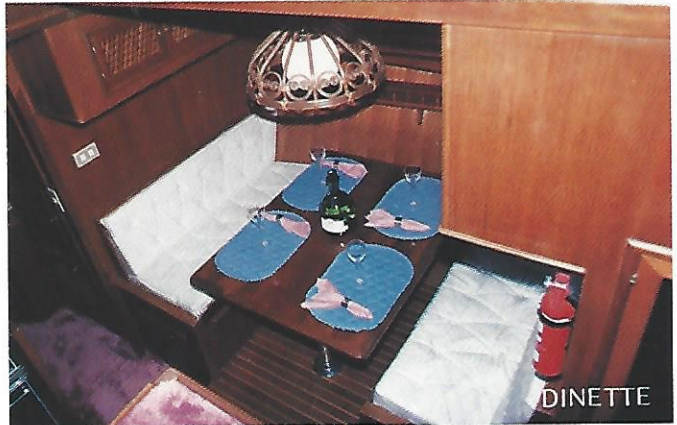
BESTWAY MOTOR YACHT 50' FLYBRIDGE LAYOUT



BESTWAY MOTOR YACHT 50' INTERIOR LAYOUT



GALLEY



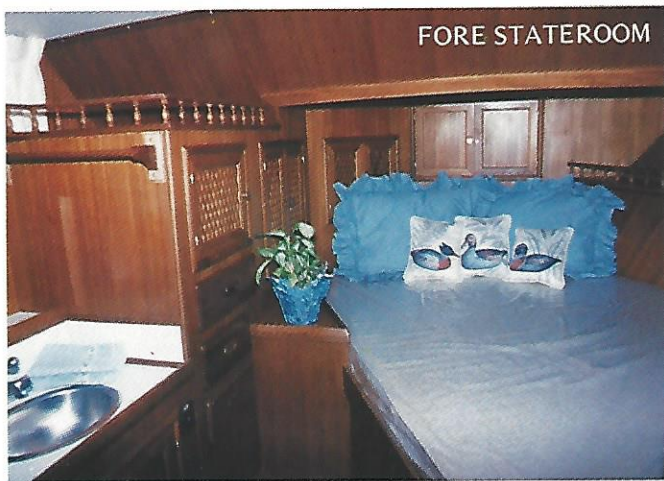
DINETTE



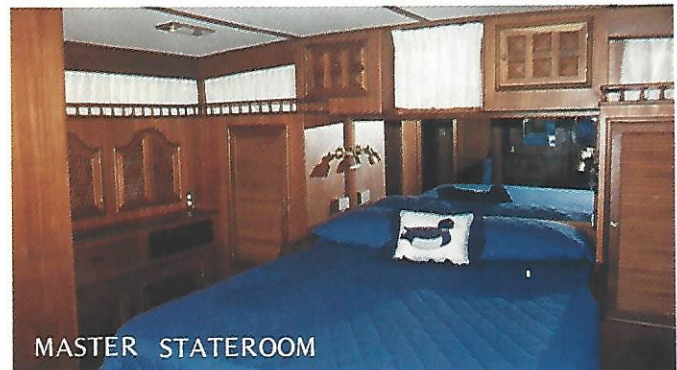
SALON



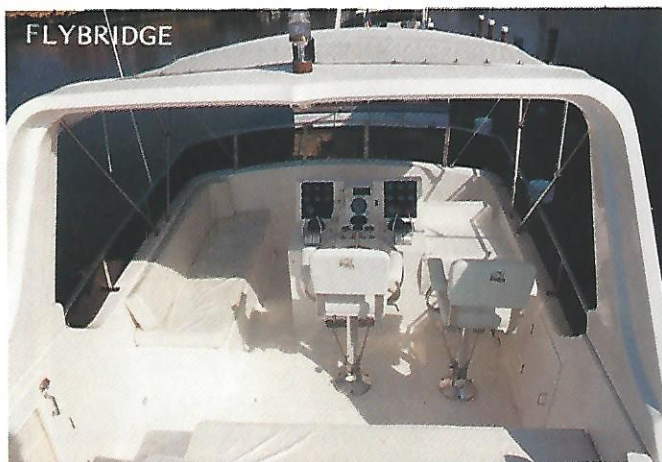
SALON



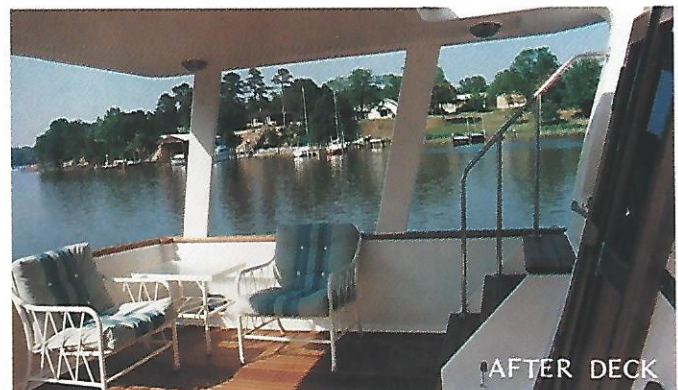
FORE STATEROOM



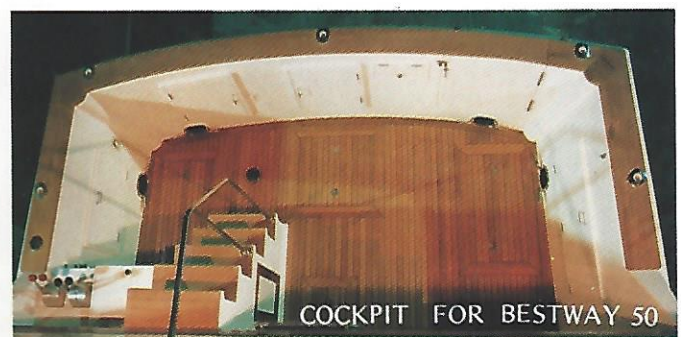
MASTER STATEROOM



FLYBRIDGE



AFTER DECK



COCKPIT FOR BESTWAY 50

Bestway Industry Corporation

2 Yung-Chuen Street
Hsiao Kang, Kaohsiung
Taiwan, Republic of China
TELEX: 72276 BESTCO

